



Cpanel3 and Webhost Manager Owners' Guide. This manual will help you to get started and answer the most common questions you may have about our product.

## The Cpanel3 and WebhostManager Manual

### Introduction

This manual is a guideline for running and maintaining certain aspects of your Cpanel3 and WebhostManager. This manual does not tell you how to run your business or apply any information for success. The cpanel3 software is designed for running a Web hosting company.



**Fact:** With the Cpanel3 and WebhostManager, your sign-ups for virtual hosting will increase dramatically, clients will stay, and your reseller programs will explode your business to the next level. This has been proven over and over again. Cpanel3 is the most powerful solution in the world today for running a hosting company.

As an owner or a reseller, you should subscribe to the Cpanel3/4 announce list, which will give you heads up on new features and update fixes. There is also a development wish list, where you are able to post and request additional features.

 **Darkorb Communications Inc.**

## Introduction to the WebhostManager

The Cpanel3 and Webhostmanger is a "TURNKEY" service to run your web hosting company, manage accounts, resellers, monitor services, self service center and much, much more. The most important feature of the control panel is the ability to have private labels or Cpanel3 themes on the client side and keep the software as transparent as possible. You can add your own features, services and control many aspects of self servicing your end users as well as allowing resellers to run their private label control panels. You can easily add 3<sup>rd</sup> party billing, shopping carts, daemons and other important features like JSP and Chili ASP; and it will not interfere with Cpanel3.

The WebhostManager is the Control Center for your server. The Webhost Manager is constantly being updated and improved, so watch out for changes (bug fixes, more features, etc.) You will be using WebhostManager to add accounts and to make sure all of your services are even running. You should keep this manual as a reference, as learning and guessing are 2 separate issues.

The Cpanel3 is your client side control panel or self service center, with the ability to create custom themes and packages; you are setting up rules. The number 1 reason for failure in the hosting business is because there is no control, failure to track, loss bandwidth, stolen accounts, lost hard drive space and unqualified admins. This product puts all of these issues into 1 simple interface. You can now control the entire environment from bandwidth to hard drive space. Now you can charge for additional services and charge more or less according to the package rules you set. 1 – 2 people can now manage 100 servers with ease, and not loose control. You may still need the good old -fashion support for questions and answers, but if you take your time and create a very informational FAQ page, this too, will also keep support down.

The Cpanel3 and the WebhostManager together create a very powerful tool to give you a competitive advantage and puts you on the cutting edge. Once you truly understand what you have, your business with grow very rapidly and resellers can now service themselves. The solution is in your hands and now you can move forward without relying on anybody but yourself.

Darkorb would like to thank the many hosting companies that have contributed to the development of this unique product, which will be part of many lives for many years to come. During the development of Cpanel3, there was no testing done to live animals; humans on the other hand, well, we are not able to disclose the results publicly. ✍ Now lets move on to the main feature - go get some soda, extra eye glasses and lets read the Manual, for what we believe, is one of the most powerful solutions for Internet Webhosting Companies in the world.

# Using your WebhostManager

Lets get started! Open up the Web Browser of your choice.

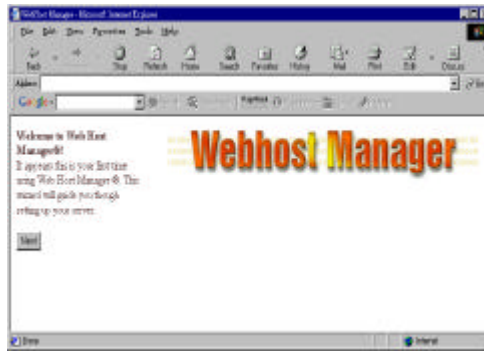
Once you have been instructed that the Cp3 has been installed, you will need to understand the 2 basic fundamentals of the WebhostManager and the Cpanel3. The WebhostManager is what the owner controls and the Cpanel3 is what the client controls. Before you get started you need to establish a machine name. The machine name is very important to identify your server as a station. When you add more servers to your company, each machine will need to be identified as a separate station to avoid confusion. Your company should have a domain name of course. Lets use this as our foundation for this manual - Lets say your main page is mrhosting.com; you have your first server, called server1.mrhosting.com, therefore the WebhostManager should have a hostname of server1.mrhosting.com. When you refer to your server or station server1, you need to start with creating your DNS for your server. When you or your upstream Internet provider assigns an IP address for your server - 211.234.11.33, you need to have an A record entered in a DNS Server to allow server1.mrhosting.com to resolve to 211.234.11.33. Lets get started with getting through the setup wizard in the WebhostManager, then we will get to adding your DNS A record.

To get to access to your Webhost Manager you need to type:

http://server.domain.com:2086 or https://server.domain.com:2087 If you do not have a DNS record added at this point, you can use your assigned ip address as the first way to connect to the server. Using the example above, http://211.234.11.33:2086

It will then ask you for a *User and Password*. The user is *Root* – password is the Root server password. Your provider supplies the root server password or you have set this set in advanced.

Once you have logged into the Webhost Manager for the first time, you should see the welcome dialog and the set up wizard, at which point you will be prompted to answer questions and fill in some values. If for some reason you made an error during setup, you can always go back and make changes to correct the error. If you have a master Cpanel3 server and you are adding slave servers, you need to make sure you establish the clustering rules you have setup already. Using some common sense, you can skip most of this introduction and go to the “main features” section. You will only need to go through this set up process 1 time. It is very important that you do not change items that you are not familiar with. *Now you select “Next” to continue the License Agreement page:*



Welcome screen

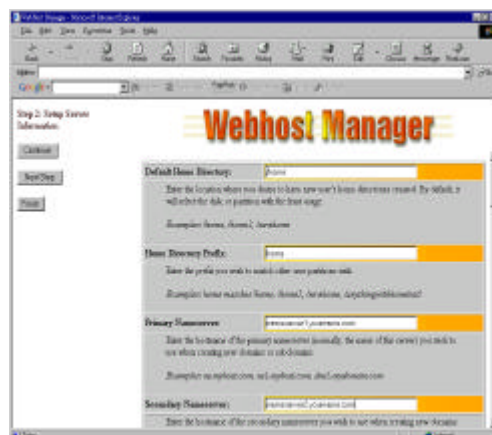
**Step1:** If you agree with the software license agreement, you will continue to the next step. After you have accepted the license agreement, you will see 3 buttons appear on the top left corner. At this point you can decide if you'd like to go through each process step by step, or just click finish and go straight to the WebhostManager.

If you choose to continue, skip the next 5 steps and go to section 6.



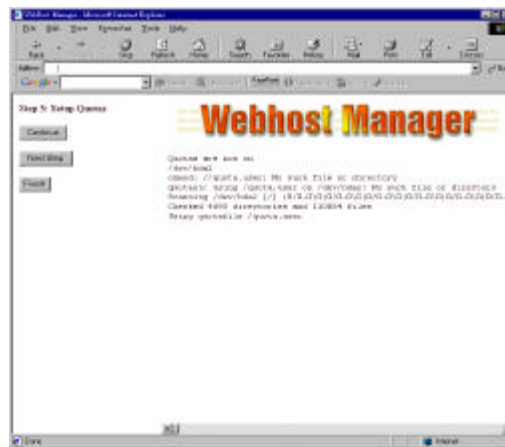
Step 1 - Software License Agreement

**Step 2:** When you see the edit setup screen you can customize your server settings and add your name servers. If there are values already in the field name, please do not make any changes unless you are sure of what you are doing. The most common field you need to add is the first and secondary name servers. (Dns1.mrhosting.com and Dns2.mrhosting.com). When you add an account to the server, these are the 2 name servers your accounts will be using. At this time don't worry about assigning Ips to your DNS, this will be explained shortly. Once you are satisfied with the server values, you will push the save button on the bottom, and then select the next step.



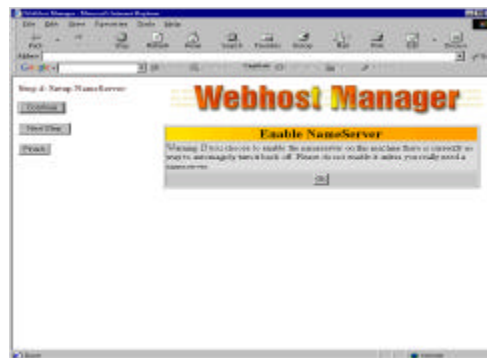
Step 2 – Setup Server

**Step 3:** This step will set up your quotas, which will allow you to control hard drive space for each user on your system. This step will take approximately 5 to 15 minutes, depending on the hard drive size. Once this is completed, you will see a message saying quotas are installed, at which point you now choose the “next step” button. You can edit user quotas later on in the account functions.



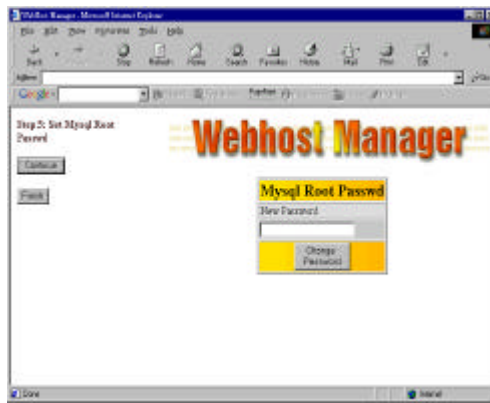
Step 3: Setup Quotas

**Step 4:** Setting up your name server- Since the control panel is 100% turnkey, you can now run your name server with ease. You do not need to rely on your upstream provider to add DNS entries for you. If you want to run your own name servers, please choose OK. If you do not want to run your own name server or if you already have one Cpanel to add DNS entries, then you do not need to select “OK” in this case. Just select the “next step” button to proceed.



Step 4: Setup NameServer

**Step 5:** Setting your MySQL root password- If you have experience with MySQL, you are aware that you can set the MySQL root password at the command line. Please use the WebhostManager to set the root password or else you will get a system wide error.



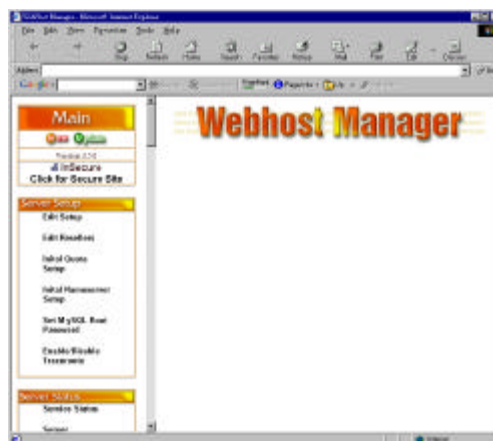
Step 5: Set MySQL Root Passwd

**Step 6: Finish Setup** Initial Setup is now complete and you are now ready to access your WebhostManager and proceed to get your business off the ground. The next few sections will give full details on what you need to do and show you how to add your first account. There are just a few more things left to do, and then you will be ready to start making money running Cpanel3 and WebhostManager.

**TIP:** Please do not give your root password to anyone except trusted staff members. If Cpanel support staff request a root password to repair your server, always verify the email address. You should change your server root password often.

---

### What you will see when logged in WebhostManager



In the next section, we will discuss the first steps you need to take to get you server ready to add accounts and resellers.

- Your 1<sup>st</sup> task is to make sure that you add your IP addresses to your server; this is under the IP section in the WebhostManager. You should have 2 IP addresses minimum to run the cpanel, 2 DNS servers and a default name based hosting IP. Your main IP is your default IP for name based hosting. This can be the same ip address as your name based hosting address. For DNS registration, you will need to make host registrations with your registrar of your choice. If you own the domain name of myhosting.com, for example, you will need to add dns1.myhosting.com to the registrar that you have your domain with. When you register your host, you will need to associate it with an Ip address on your server
- Your 2<sup>nd</sup> task is to add your server hostname account, which will allow you to add DNS records and get your email working. Once you have your hostname account, then you will move on to creating your packages and setting up your criteria for your business. Please have your packages prepared.

## MAIN MENU SYSTEM

### The WebhostManager Controls

#### Server Setup

**Edit Setup:** This will edit the configuration files for the server. You should only allow CPANEL Staff to edit anything in this section. This normally is not touched.

**Initial Quota Setup:** This will install the quota service on your server. This only needs to be installed 1 time. (Quotas are how you define how much hard-drive space is allowed by the users on the server. ) This is normally installed by default.

**Initial Name Server Setup:** If you plan on running local DNS, you will run this function.

**Set MYSQL Root Password:** This will set your MYSQL root Password

**Enable/Disable Traceroute:** This will turn on/off your Traceroute in the cpanel. (Under tools)

**Change Root Password:** Change the Root Passwd on your Server. "Root is your master passwd."

#### Server Status

**Status of Services:** This will show you how your server is feeling today. It will tell you what is running and if anything has failed. There will be 3 colors to indicate the status: red , yellow and green. (Green is good, Yellow means warning, Red is bad.)

Server Stats: This will output the details of your server's status. It may be confusing at first, but you will learn how to read this after a little while.

## **Account Functions**

List Accounts

Process Signups

Create a new account: This is how you add an account to your server. When adding the account you only use the domain name- do not put WWW in front. The server will automatically assign an IP to the account and add it to all of the proper services. You can then view the output once the account is added, print the page or cut and paste it to email and send it to your client. This will also let you know about errors, if you ran out of Ip's ect.

[Skeleton Directory](#)

Terminate an account: - This will remove all files, data and any info on the client. All information is deleted for security purposes. This process is not reversible; once this is done there is no going back. \*So please make sure you select the correct account.

[Modify an Account](#)

[Upgrade / Downgrade an Account](#)

[Rearrange Accounts](#)

[View Bandwidth Usage](#)

[Limit Bandwidth Usage](#)

[UN] Suspend an Acct: This will (un) suspend the users account, for example : "NON PAYMENT" or if you want to troubleshoot the account for high loads ect. This function does not delete any data or damage the account in any way.

Quotas: This feature allows you to control the hard-drive space usage on the account. You have a certain size hard-drive on the server, so you need to make sure users are not free to fill up the hard-drive and cause the machine to crash.

Passwords: Change the users passwords on the accounts.

[Show Active and Inactive Accounts](#)



[Change ownership of an account](#)

[Disable or Enable Demo Mode on an Account](#)

[Disable or Enable Sub domains Per Account](#)

[Show Reseller Accounts](#)

[Download a Raw Apache Log](#)

**DNS Functions** This is for those running their own DNS

Park a domain – Pointing a domain to another existing domain.

Add a DNS Entry – Manual adding of a DNS. The normal account set up will add domain entries for you.

Delete a DNS entry - Deletes a domain entry

Clean up DNS Server's Config Files – Will delete DNS log files

Establish a trust relationship with a primary DNS server:

**Resync DNS with the master DNS server:**

**FrontPage**

Install Extensions – This will install the FrontPage Web Server extensions. Some clients may want to use the Microsoft FrontPage to send files to the server instead of using an Ftp program.

Install Mail Extensions = This will install the mail extensions for FrontPage.

**MYSQL**

Change a MYSQL User/DB Password – This will change the MYSQL database password for the user. \*The MYSQL website has information on how to use MYSQL. (see [Http://www.mysql.com](http://www.mysql.com))

**IP Functions**

Rebuild the Ip Pool – This will locate free Ips on the server and put them into an “IP pool” located on the server.

Show Ip Usage – This will show how your Ips are allocated on the server. (Which are free or used.)

**Software**

Update Server Software: Custom installpack rpms update

Update System Software: Redhat rpm updates from Redhat

Update Backend Scripts: Webhost Manager backend

## **Security**

**Quick Security Scan** – This will scan the server for root kits and hacking tools.

**Limit Apache Memory usage** (to prevent crashes) - prevents Cgi scripts from taking over the server and eating up all the memory.

**Scan for Trojan Horses** – This will scan the major programs to see if they were replaced by bad “imitations” programs.

## **E-Mail**

**Mail Trouble Shooter** - If a client's email is broken, this offers some possible solutions.

## **System Health**

**Show Disk Usage** – How much hard-drive space is being used on the server.

**Show CPU Usage** – This will show how hard your CPU is working

**Show Running Processes** – What is running on the server.

## **Disk Drives**

**Format/Mount a new drive** - This will install and get a new drive ready for use.

## **SSL**

**Generate an SSL Certificate and Signing Request** – This will generate an SSL key for Thawte so you can request a certificate, then you will insert the key in the next option.

**Install an SSL Certificate and setup the domain** - Insert your key from Thawte here for an account. This will activate the https feature for the account.

## **Cpanel 3**

**Admin,-** You can edit the Cpanel controls here. Use Cpanel and the Root password for the system

**Upgrade to latest version** – Cpanel3 will be updated

**Resync Ftp Passwords** – Ftp update passwords. If you change the password for a user, you may need to update the password for the Ftp server.

### **(Re) start Services**

**Mail Server (Exim)** – This will start / restart your mail server

**DNS/Name Server (Bind)** - This will start / restart your name server

**Imap Server (UW ImapD)** – This will start / restart the IMAP server

**Ftp Server (Proftpd)** – This will start / restart your Ftp server

**Http Server (Apache)** This will start / restart your Web server.

**Pop3 Server (Qpopper)** – This will start / restart your POP Server

After a few weeks of using the Webhost Manger, you will become a pro, and then you can start focusing on getting the sales. Remember, every so often **we do** add features and add additional improvements in the Webhost Manager, so updating at least once every 2 weeks will keep the box up to par. This will include updates, fixed bugs and security issues in the Webhost Manager, Cpanel3 and the Server itself. If in the event that you find something not working, don't go crazy, just call Your Hosting Provider to see if there is report or an issue on it. There are always environment changes going on in the background such as Redhat releases, upgrades, new hardware, security issues and ofcourse, hacker prevention.

---

### How to access the Cpanel and Webhost Manager ports

---

#### **Q: How do I access Cpanel?**

A: <http://www.yourdomain.com:2082>

Login with Unix, your username and password.

#### **Q: How do I access a secure version of the Cpanel?**

A: <https://www.yourdomain.com:2083>

Login with Unix, your username and password.

#### **Q: How do I access the Cpanel admin interface?**

A: <https://www.yourdomain.com:2083> or  
<http://www.yourdomain.com:2082> (not secure)  
Login as Cpanel with the password for that account or the Root password. We recommend that you do not use the Root password.

**Q: How do I access the Web Host Manager?**

A: Insecure Method  
<http://www.yourdomain.com:2086>  
Login as root with the Root password  
A: Secure Method  
<https://www.yourdomain.com:2087>  
Login as root with the Root password

**WebMail can be accessed directly without connecting to the Cpanel.**

**<http://www.domain.com/webmail/> or <http://www.domain.com:2095>**

**Q: I don't know the password to a user's account and I need access to their Cpanel**

**A: Login with their username and the Root password.**

---

### Writing your own Theme for Cpanel3

Now you can create the totally independent company impression

---

**Part 1. Creating a place for your theme:**

You will need to come up with a name for your theme. Cpanel3 currently comes with 2 themes labeled default and mail only. **Do not call your themes either of these two names or your theme will get overwritten when Cpanel3 is updated.**

**The following theme names are reserved words and should not be used:**

*YES, NO, y, tree, iconic.*

Below is an example of how to create your theme. This will make an exact copy of the default theme, which you should then be able to edit.

```
[root@yourserver]# cd /usr/local/cpanel/base/frontend
[root@yourserver]# cp -a default yourtheme
```

**TIP:** If your not too familiar with shell commands, you can ask your server administrator to set an FTP account to the base dir, so you can ftp the themes back and forth.

## Part 2. Calling Cpanel3 standard functions from an HTML document.

Creating your own HTML theme is a very simple process. You probably don't even need to modify any of the <cpanel> tags in any of the standard HTML documents. We can see a sample of how <cpanel> tags are processed by looking at the below example.

```
<cpanel Email="addpop($FORM{'email'},$FORM{'password'})">
```

This tag above would appear in a document that will be the action of a <form> tag.

The variables **email** and **password** should be supplied by some type of <input> tag. Once the form is posted to the HTML document containing the <cpanel> tag, the variables will be expanded and the addpop() function will be called with the values supplied in the form. The tag will then be replaced by the output from the addpop() operation and sent back to the user in place of the <cpanel> tag. Before you continue you may want to examine /usr/local/cpanel/myapi.txt to see currently available calls that work in an HTML page to the Cpanel engine. It should also be noted that the engine knows how to expand the following variables. Some of these may be redundant for reverse compatibility.

```
$FORM{*}
$ENV{*}
$homedir
DOMAIN
$CPDATA{*}
```

(These are the values of the data from the users /var/cpanel/users/[username] File)

Remember the tags are always case sensitive when making a call to a function. Another example of how to use the HTML system is below.

**Your Home directory is <b><cpanel print="\$homedir"></b>**

This is a rather simple example that should just display where the user's home directory is.

The following sub-calls inside the Cpanel take are defined:

Function	Arguments
----------	-----------

Print	1	Expands and prints any text given
cprint	1	Same as print, but strips new lines
Sprint (Split print)	3 (String, Separator,X)	Sprint calls a split of the variable at the separator given and returns the X parts of the split
Email	varies	*See myapi.txt
Cron	varies	*See myapi.txt
Ftp	varies	*See myapi.txt
Mysql	varies	*See myapi.txt
SubDomain	varies	*See myapi.txt
Password	varies	*See myapi.txt
Fileman	varies	*See myapi.txt
Htaccess	varies	*See myapi.txt
Cgi	varies	*See myapi.txt
Net	varies	*See myapi.txt
Version	0	Displays version
waitforfile	-	Deprecated do not use
CP	0	Prints debug Information

***\* The myapi.txt is section IV below***

These features here will require some playing around with to get the full feel and understanding. Most webmasters should be able to figure out what the tags mean; if not we can always refer people to assist in the understanding of the syntax and how to implement.

### **Part 3. Calling Cpanel3 and Perl functions from a html document.**

The Cpanel engine supports calling Perl scripts inside, which will have access to its variable space. For example, if you place in an html document parsed by Cpanel the following line:

```
<perl /usr/local/cpanel/base/frontend/default/test.pl>
```

And create a Perl script at the location

(*/usr/local/cpanel/base/frontend/default/test.pl*), the script will be run

when the Cpanel engine parses that document. A sample script is below:

```
#!/usr/bin/perl
My($domain);
print "Your home directory is " . $Cpanel::homedir . "\n<br>;
```

```

print      "You      have      the      following      subdomains:      <br>\n";
my(@SubDomains) = listsubdomains();
foreach    $domain      (@SubDomains)    {
print      "$domain"      .      <br>\n";
}
1;

```

The script must return to a non-zero value or it will not be run. Thus the 1; at the end of the script.

#### **Part 4. Calling Cpanel3 functions from a Perl script.**

Do not use this method, for it is slow and basically a kludge. It is only provided as a LAST RESORT. A sample script is below. If you don't understand it, then you probably shouldn't be doing it anyway.

```

#!/usr/bin/perl

BEGIN {

    push(@INC,"/usr/local/cpanel");

}
use Cpanel;
my($cpanel) = Cpanel->new;

$cpanel->initcp;
use Cpanel::Preparse;
my($cpanelp) = Cpanel::Preparse->new;
print "Content-type: text/html\n\n";
print "<pre>";
($filters,$lists,$forwards,$responders,$pops) =
    split(/\./,$cpanelp->exec("",
        "<cpanel Email=\"countfilters()\">,<cpanel
Email=\"countlists()\">,<cpanel Email=\"countforwards()\">,<cpanel
Email=\"countresponders()\">,<cpanel Email=\"countpops()\">"));
    print "You have $filters Filters\n";
    print "You have $lists Lists\n";
    print "You have $forwards Forwards\n";
    print "You have $responders Responders\n";
    print "You have $pops Pops\n";

```

---

## MYAPI.TXT INFO

The code here may look like gibberish from the 7<sup>th</sup> galaxy, but once you get familiar with this it will just be simple add-ons. The creating of your own Cpanel theme is just like making a web page with instructions, just add the links and then it will work. The end result will be a Cpanel with your touch and company logo or branded look.

---

```
Cpanel/Cgi.pm: phpmyadminlink
Cpanel/Cgi.pm- if ($ENV'IAMROOT'} eq "")
--
Cpanel/Cgi.pm: indexsearch
Cpanel/Cgi.pm- system("/usr/local/cpanel/bin/makeindex");
--
Cpanel/Cgi.pm: initcart
Cpanel/Cgi.pm- if (! -e "$Cpanel::homedir/catalogs")
--
Cpanel/Cgi.pm: mkclock
Cpanel/Cgi.pm- my($html,$tz,$tf,$border,$date,$fg,$bg) = @_;
--
Cpanel/Cgi.pm: mkcountdown
Cpanel/Cgi.pm- my($html,$tz,$month,$hour,$day,$year) = @_;
--
Cpanel/Cgi.pm: mkcounter
Cpanel/Cgi.pm- my
($preview,$html,$type,$timezone,$timeformat,$dateformat,$framethick,$fred,$fgreen,$fblue,
$maxdigits,$style,$sred,$sgreen,$sblue,$rred,$rgreen,$rblue,$name) = @_;
--
Cpanel/Cgi.pm: showbanners
Cpanel/Cgi.pm- my($start,$direction) = @_;
--
Cpanel/Cgi.pm: indexbanners
Cpanel/Cgi.pm- my(%PRIO,$name,$value);
--
Cpanel/Cgi.pm: changeprio
--
Cpanel/Cgi.pm: changelink
Cpanel/Cgi.pm- my($banner,$link) = @_;
--
Cpanel/CleanHtml.pm: cleanhtml
Cpanel/CleanHtml.pm- my($html) = @_;
--
Cpanel/CleanHtml.pm: dohtmltag
Cpanel/CleanHtml.pm- my($tag) = @_;
--
Cpanel/Cron.pm: rem_cron
Cpanel/Cron.pm- my ($cline) = @_;
--
Cpanel/Cron.pm: list_cron
```



```

Cpanel/Cron.pm- my(@CTS,$ct,@CRON);
--
Cpanel/Cron.pm: edit_cron
Cpanel/Cron.pm- my (%FORM) = @_;
--
Cpanel/Email.pm: get_filterconfig
Cpanel/Email.pm- open(FC,"$Cpanel::homedir/.filter");
--
Cpanel/Email.pm: get_mailconfig
Cpanel/Email.pm- my ($domain) = @_;
--
Cpanel/Email.pm: rebuildfconf
Cpanel/Email.pm- my($domain) = @_;
--
Cpanel/Email.pm: rebuildconf
Cpanel/Email.pm- my($domain) = @_;
--
Cpanel/Email.pm: countfilters
Cpanel/Email.pm- get_filterconfig();
--
Cpanel/Email.pm: delfilter
Cpanel/Email.pm- my($email) = @_;
--
Cpanel/Email.pm: addfilter
Cpanel/Email.pm- my($email,$method,$msgpart) = @_;
--
Cpanel/Email.pm: listfilters
Cpanel/Email.pm- my(%FILTERS,$filter);
--
Cpanel/Email.pm: listlists
Cpanel/Email.pm- my(@LISTS,$list,@ALISTS);
--
Cpanel/Email.pm: countlists
Cpanel/Email.pm- my($domain);
--
Cpanel/Email.pm: addlist
Cpanel/Email.pm- my($list,$password,$domain) = @_;
--
Cpanel/Email.pm: dellist
Cpanel/Email.pm- my($list) = @_;
--
Cpanel/Email.pm: countforwards
Cpanel/Email.pm- my($dest,$finaldest,@ADDYS,$addy,$count);
--
Cpanel/Email.pm: addforward
Cpanel/Email.pm- my($email,$forward,$domain) = @_;
--
Cpanel/Email.pm: setdefaultaddress
Cpanel/Email.pm- my($email,$domain) = @_;
--

```

```

Cpanel/Email.pm: defaultaddress
Cpanel/Email.pm- my($domain) = @_;
--
Cpanel/Email.pm: delforward
Cpanel/Email.pm- my($address,$acct) = @_;
--
Cpanel/Email.pm: listforwards
Cpanel/Email.pm-
--
Cpanel/Email.pm: addautoresponder
Cpanel/Email.pm-
--
Cpanel/Email.pm: delautoresponder
Cpanel/Email.pm- my($email) = @_;
--
Cpanel/Email.pm: listautoresponders
--
Cpanel/Email.pm: countresponders
Cpanel/Email.pm- my(@responders,$responder);
--
Cpanel/Email.pm: addpop
Cpanel/Email.pm- my($email,$password) = @_;
--
Cpanel/Email.pm: cleanusername
Cpanel/Email.pm- my $maybeuser = shift;
--
Cpanel/Email.pm: delpop
Cpanel/Email.pm- my($email) = @_;
--
Cpanel/Email.pm: passwdpop
Cpanel/Email.pm- my($email,$passwd) = @_;
--
Cpanel/Email.pm: listpops
Cpanel/Email.pm- my($login,@POPS,%POPTMP);
--
Cpanel/Email.pm: countpops
Cpanel/Email.pm- my($login,$count,%POPTMP);
--
Cpanel/ExampleModule.pm: ExampleModule_init
Cpanel/ExampleModule.pm- return;
--
Cpanel/ExampleModule.pm: ExampleModule_printfile
Cpanel/ExampleModule.pm- my($file) = @_;
--
Cpanel/Fileman.pm: listtemplates
Cpanel/Fileman.pm- my(@TMPs,$tmpl);
--
Cpanel/Fileman.pm: uploadfiles
Cpanel/Fileman.pm- my(%FORM) = @_;
--

```

```

Cpanel/Fileman.pm: restorefiles
Cpanel/Fileman.pm- my(%FORM) = @_;
--
Cpanel/Fileman.pm: listfiles
Cpanel/Fileman.pm- my($dir) = @_;
--
Cpanel/Fileman.pm: dofileop
Cpanel/Fileman.pm- my($opdir,$opfile,$dir,$fileop) = @_;
--
Cpanel/Fileman.pm: changeperm
Cpanel/Fileman.pm- my($dir,$file,$ur,$uw,$ux,$gr,$gw,$gx,$wr,$ww,$wx) = @_;
--
Cpanel/Fileman.pm: showperm
Cpanel/Fileman.pm- my($dir,$file) = @_;
--
Cpanel/Fileman.pm: fileops
Cpanel/Fileman.pm- my($opdir,$opfile,$dir,$fileop) = @_;
--
Cpanel/Fileman.pm: showtrash
Cpanel/Fileman.pm- my($image,$dir,$file,@DIRLS,$ext);
--
Cpanel/Fileman.pm: fmpushfile
Cpanel/Fileman.pm- my($dir,$file) = @_;
--
Cpanel/Fileman.pm: fmsavefile
Cpanel/Fileman.pm- my($dir,$file,$page) = @_;
--
Cpanel/Fileman.pm: fileimg
Cpanel/Fileman.pm- my($dir,$file) = @_;
--
Cpanel/Fileman.pm: showactions
Cpanel/Fileman.pm- my($dir,$file) = @_;
--
Cpanel/Fileman.pm: showdiractions
Cpanel/Fileman.pm- my($dir,$file) = @_;
--
Cpanel/Fileman.pm: fmmkdir
--
Cpanel/Fileman.pm: fmrename
--
Cpanel/Fileman.pm: fmmkfile
--
Cpanel/Fileman.pm: getfile
Cpanel/Fileman.pm- my($dir,$file) = @_;
--
Cpanel/Fileman.pm: viewfile
Cpanel/Fileman.pm- my($mydir,$myfile);
--
Cpanel/Fileman.pm: extractfile
Cpanel/Fileman.pm- my($dir,$file) = @_;

```

```

--
Cpanel/Fileman.pm: emptytrash
Cpanel/Fileman.pm- my($pwd,@TRASHFILES,$file,@ALLFILES);
--
Cpanel/Fileman.pm: installfile
Cpanel/Fileman.pm- my($file,$destfile) = @_;
--
Cpanel/Fileman.pm- my($file) = @_;
--
Cpanel/Fileman.pm: delfile
Cpanel/Fileman.pm- my($dir,$file) = @_;
--
Cpanel/Fileman.pm: realdelfile
Cpanel/Fileman.pm- my($dir,$file) = @_;
--
Cpanel/Fileman.pm: restorefile
Cpanel/Fileman.pm- my($file) = @_;
--
Cpanel/Form.pm: parseform
Cpanel/Form.pm- my ($fh) = @_;
--
Cpanel/Ftp.pm: addftp
Cpanel/Ftp.pm- my ($user,$pass) = @_;
--
Cpanel/Ftp.pm: hasftp
Cpanel/Ftp.pm- open(PC,find_proftpconf());
--
Cpanel/Ftp.pm: delftp
Cpanel/Ftp.pm- my ($user) = @_;
--
Cpanel/Ftp.pm: passwdftp
Cpanel/Ftp.pm- my ($user,$pass) = @_;
--
Cpanel/Ftp.pm: get_anonftp
Cpanel/Ftp.pm- my($mode);
--
Cpanel/Ftp.pm: set_anonftp
Cpanel/Ftp.pm- my($perm);
--
Cpanel/Ftp.pm: get_anonftpin
Cpanel/Ftp.pm- if (! -e "$Cpanel::homedir/public_ftp/incoming") mkdir
"$Cpanel::homedir/public_ftp/incoming",0700; }
--
Cpanel/Ftp.pm: set_anonftpin
Cpanel/Ftp.pm- my ($set) = @_;
--
Cpanel/Ftp.pm: get_welcomemsg
Cpanel/Ftp.pm- my($message);
--
Cpanel/Ftp.pm: set_welcomemsg

```

```

Cpanel/Ftp.pm- my ($message) = @_ ;
--
Cpanel/Ftp.pm: listftp
Cpanel/Ftp.pm- my (@ftpaccts,$user);
--
Cpanel/Ftp.pm: countftp
Cpanel/Ftp.pm- my ($ftpcount,$user);
--
Cpanel/Ftp.pm: kill_ftp_session
Cpanel/Ftp.pm- my ($pid) = @_ ;
--
Cpanel/Ftp.pm: ftp_sessions
Cpanel/Ftp.pm- my ($ps,@PS);
--
Cpanel/Ftp.pm: find_proftpconf
Cpanel/Ftp.pm- my (@LOC,$loc);
--
Cpanel/Htaccess.pm: htdirs
Cpanel/Htaccess.pm- my ($dir) = @_ ;
--
Cpanel/Htaccess.pm: checkprotected
Cpanel/Htaccess.pm- my ($dir) = @_ ;
--
Cpanel/Htaccess.pm: set_protect
Cpanel/Htaccess.pm- my ($dir,$pval,$resname) = @_ ;
--
Cpanel/Htaccess.pm: resname
Cpanel/Htaccess.pm- my ($dir) = @_ ;
--
Cpanel/Htaccess.pm: showusers
Cpanel/Htaccess.pm- my ($dir) = @_ ;
--
Cpanel/Htaccess.pm: set_pass
Cpanel/Htaccess.pm- my ($dir,$user,$pass) = @_ ;
--
Cpanel/Htaccess.pm: del_user
Cpanel/Htaccess.pm- my ($dir,$user) = @_ ;
--
Cpanel/lps.pm: checkip
Cpanel/lps.pm- my ($ip) = @_ ;
--
Cpanel/Lang.pm: loadlang
Cpanel/Lang.pm- my ($lang) = $_[0];
--
Cpanel/LastLogin.pm: lastlogin
Cpanel/LastLogin.pm- my ($host,$currenthost);
--
Cpanel/Mime.pm: find_httpconf
Cpanel/Mime.pm- my (@LOC,$loc);
--

```

```

Cpanel/Mime.pm: find_srmconf
Cpanel/Mime.pm- my(@LOC,$loc);
--
Cpanel/Mime.pm: find_mimetypes
Cpanel/Mime.pm- my(@LOC,$loc);
--
Cpanel/Mime.pm: system_mime
Cpanel/Mime.pm- my(%MIME);
--
Cpanel/Mime.pm: system_handlers
Cpanel/Mime.pm- my(%HANDLERS);
--
Cpanel/Mime.pm: user_handlers
Cpanel/Mime.pm- my(%HANDLERS);
--
Cpanel/Mime.pm: user_mime
Cpanel/Mime.pm- my(%MIME);
--
Cpanel/Mime.pm: add_mime
Cpanel/Mime.pm- my ($type,$ext) = @_ ;
--
Cpanel/Mime.pm: add_handler
Cpanel/Mime.pm- my ($ext,$handler) = @_ ;
--
Cpanel/Mime.pm: del_mime
Cpanel/Mime.pm- my ($type) = @_ ;
--
Cpanel/Mime.pm: del_handler
Cpanel/Mime.pm- my ($ext) = @_ ;
--
Cpanel/Mysql.pm-
--
Cpanel/Mysql.pm: create_db
Cpanel/Mysql.pm- my($self,$dbname) = @_ ;
--
Cpanel/Mysql.pm: reload_db
Cpanel/Mysql.pm- my($self,$dbname) = @_ ;
--
Cpanel/Mysql.pm: drop_db
Cpanel/Mysql.pm- my($self,$dbname) = @_ ;
--
Cpanel/Mysql.pm: updateprivs
Cpanel/Mysql.pm- my(@DBS,$kludge,$db,$mysql);
--
Cpanel/Mysql.pm: addusertodb
Cpanel/Mysql.pm- my($self,$dbname,$dbuser) = @_ ;
--
Cpanel/Mysql.pm: deluserfromdb
Cpanel/Mysql.pm- my($self,$dbname,$dbuser) = @_ ;
--

```

```

Cpanel/Mysql.pm: passwduser
Cpanel/Mysql.pm- my($self,$dbuser,$dbpass) = @_;
--
Cpanel/Mysql.pm: deluser
Cpanel/Mysql.pm- my($self,$dbuser) = @_;
--
Cpanel/Mysql.pm: listdbs
Cpanel/Mysql.pm- my($self) = @_;
--
Cpanel/Mysql.pm: countdbs
Cpanel/Mysql.pm- my($self) = @_;
--
Cpanel/Mysql.pm: listusers
Cpanel/Mysql.pm- $|=1;
--
Cpanel/Mysql.pm: listusersindb
Cpanel/Mysql.pm- my($self,$db) = @_;
--
Cpanel/Mysql.pm: find_mysqladmin
Cpanel/Mysql.pm- my($self) = @_;
--
Cpanel/Mysql.pm: find_mysql
Cpanel/Mysql.pm- my($self) = @_;
--
Cpanel/Net.pm: traceroute
Cpanel/Net.pm- alarm(100);
--
Cpanel/Net.pm: dnslookup
Cpanel/Net.pm- alarm(100);
--
Cpanel/Net.pm: dnszone
Cpanel/Net.pm- alarm(100);
--
Cpanel/Passwd.pm: change_password
--
Cpanel/Preparse.pm-
--
Cpanel/Preparse.pm: exec
Cpanel/Preparse.pm- my ($self,$nstd,$page) = @_;
--
Cpanel/Quota.pm: showusage
Cpanel/Quota.pm-      chomp(my $resp = `du -sh ~ 2>/dev/null`);
--
Cpanel/Quota.pm: displayquota
Cpanel/Quota.pm-
my($USED,$LIMIT,@REPQUOTA,$quotelines,$repquota,$used,$hard,$username,$REMAI
N);
--
Cpanel/Stats.pm: find_wwwaccesslog
Cpanel/Stats.pm- my ($domain) = @_;

```

```

--
Cpanel/Stats.pm: find_wwwerrorlog
Cpanel/Stats.pm- my ($domain) = @_ ;
--
Cpanel/Stats.pm: find_ftplog
Cpanel/Stats.pm- my ($domain) = @_ ;
--
Cpanel/Stats.pm: countbandwidth
Cpanel/Stats.pm- my($month,$year,$bytes);
--
Cpanel/Stats.pm: showbandwidth
Cpanel/Stats.pm- my(@MoY) =
('Jan','Feb','Mar','Apr','May','Jun','Jul','Aug','Sep','Oct','Nov','Dec');
--
Cpanel/Stats.pm: analoglist
Cpanel/Stats.pm- my(@MoY) =
('Jan','Feb','Mar','Apr','May','Jun','Jul','Aug','Sep','Oct','Nov','Dec');
--
Cpanel/Stats.pm: analog
Cpanel/Stats.pm- my ($domain) = @_ ;
--
Cpanel/Stats.pm: errlog
Cpanel/Stats.pm- my ($domain) = @_ ;
--
Cpanel/Stats.pm: webalizer
Cpanel/Stats.pm- my ($domain) = @_ ;
--
Cpanel/Stats.pm: webalizerftp
Cpanel/Stats.pm- my ($domain) = @_ ;
--
Cpanel/Stats.pm: lastvisitors
Cpanel/Stats.pm- my ($domain,$file,$numlines) = @_ ;
--
Cpanel/Stats.pm: ctime
Cpanel/Stats.pm- my($time) = time();
--
Cpanel/Stats.pm: getmonth
Cpanel/Stats.pm- my($mon);
--
Cpanel/Stats.pm: getyear
Cpanel/Stats.pm- my($year);
--
Cpanel/Stats.pm: find_byteslog
Cpanel/Stats.pm- my ($domain) = @_ ;
--
Cpanel/Stats.pm: getmonth
Cpanel/Stats.pm- my($mon);
--
Cpanel/Stats.pm: getyear
Cpanel/Stats.pm- my($year);

```



```

--
Cpanel/SubDomain.pm: find_httpconf
Cpanel/SubDomain.pm- my(@LOC,$loc);
--
Cpanel/SubDomain.pm: listdomains
Cpanel/SubDomain.pm- my(@SD);
--
Cpanel/SubDomain.pm: countdomains
Cpanel/SubDomain.pm- my($httpconf) = find_httpconf();
--
Cpanel/SubDomain.pm: adddomain
Cpanel/SubDomain.pm- my($domain) = @_ ;
--
Cpanel/SubDomain.pm: deldomain
Cpanel/SubDomain.pm- my($domain) = @_ ;
--
Cpanel/Submit.pm: listengines
Cpanel/Submit.pm- opendir(SCG,"$Cpanel::root/etc/searchengs");
--
Cpanel/Submit.pm: mitengs
Cpanel/Submit.pm- my(%FORM) = @_ ;
--
Cpanel/Submit.pm: geturl
Cpanel/Submit.pm- my($url) = @_ ;
--
Cpanel/Submit.pm: posturl
Cpanel/Submit.pm- my($url,$data) = @_ ;
--
Cpanel/Version.pm: getversion
Cpanel/Version.pm- return "3.7.0-STABLE_170";
--
Cpanel/Version.pm: getbuild
Cpanel/Version.pm- return "Sat Jan 27 22:45:53 EST 2001

```

API TAGS	\$"set_anonftpin"
\$"showquotaused"	\$"kill_ftp_session"
\$"showquotamax"	\$"get_welcomemsg"
	\$"set_welcomemsg"

\$"showquotaremain"	\$"addftp"
\$"analog"	\$"passwdfstp"
\$"showbandwidth"	\$"delftp"
\$"analoglist"	\$"ftp_sessions"
\$"errlog"	\$"printdomainoptions"
\$"webalizer"	\$"setdefaultaddress"
\$"webalizerftp"	\$"defaultaddress"
\$"countbandwidth"	\$"addautoresponder"
\$"lastvisitors"	\$"delautoresponder"
\$"change_password"	\$"listautoresponders"
\$"lastlogin"	\$"countfilters"
\$"adduser"	\$"countlists"
\$"deluser"	\$"countpops"
\$"adddb"	\$"countresponders"
\$"deldb"	\$"countforwards"
\$"listusers"	\$"addpop"
\$"listusersopt"	\$"listlists"
\$"listdbsopt"	\$"dellist"
\$"listdbs"	\$"addlist"
\$"countdbs"	\$"delpop"
\$"listusersindb"	\$"passwdpop"
\$"adduserdb"	\$"addfilter"
\$"deluserdb"	\$"delfilter"
\$"traceroute"	\$"addforward"
\$"dnslookup"	\$"delforward"
\$"dnszone"	\$"listpopstable"
\$"edit_cron"	\$"listpopsselect"
\$"rem_cron"	\$"listpops"    \$"listpoplogins"
\$"list_cron"	\$"listforwards"
\$"countsubdomains"	\$"listforwardstable"
\$"listsubdomains"	\$"listfordwardsselect"
\$"listsubdomainsop"	\$"listfiltersselect"
\$"addsubdomain"	\$"listfilterstable"
\$"delsubdomain"	\$"listfilters"
\$"htdirs"	\$"fmmkfile"
\$"set_protect"	\$"installfile"
\$"checkprotected"	\$"showperm"
\$"resname"	\$"changeperm"
\$"showusers"	\$"fmmkdir"
\$"set_pass"	\$"fmrename"
\$"del_user"	\$"editfile"
\$"accessloglink"	\$"delfile"
\$"phpmyadminlink"	\$"realdelfile"
\$"backuplink"	\$"fileimg"
\$"mkcounter"	\$"restorefile"
\$"initcart"	\$"fmpushfile"
\$"mkclock"	\$"fmsavefile"
\$"mkcountdown"	\$"showtrash"
\$"changelink"	\$"emptytrash"

"\$indexbanners" "\$showbanners" "\$changeprio" "\$indexsearch" "\$listengines" "\$submitengs" "\$add_mime" "\$del_mime" "\$add_handler" "\$del_handler" "\$system_mime" "\$system_handlers" "\$user_mime" "\$user_handlers" "\$user_mime_options" "\$uploadfiles" "\$restorefiles" "\$viewfile" "\$extractfile"	"\$showdiractions" "\$listftpstable" "\$countftp" "\$get_anonftp" "\$get_anonftpin" "\$set_anonftp" "\$user_handlers_options" "\$listfiles" "\$newcgifile" "\$listtemplates" "\$printdir" "\$printfile" "\$getfile" "\$dofileop" "\$fileops" "\$showactions"
--	---

## INTERNET TERMS

### Section V

Quick lesson on Internet Terms:

- **Co-location:** Is when a client sends a server for you to host and you just charge for bandwidth and services.
- **Dedicated Server:** When you provide the server for the client and charge them accordingly (rent, maintenance, services and bandwidth.)
- **Bandwidth:** Is the traffic usage for the website visitors from the account to the end user.
- **Hard-drive Space:** The space used to allocate the data for the client's images, WebPages and files.
- **IP Address:** The web address in the form of a number (222.123.25.236). Each server is allocated the Ips to have domain names point to them. You can read Oriely DNS and BIND for details.

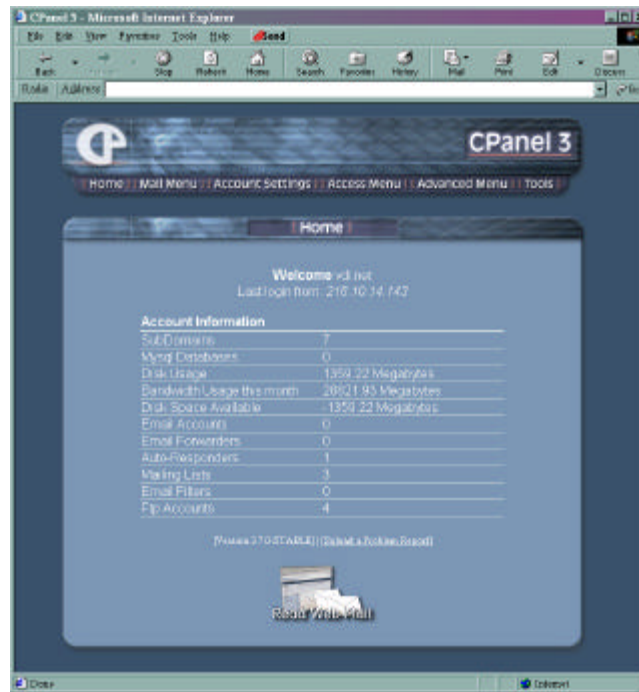
- **URL:** Universal Resource Locator-This is usually typed in the web browser in the form of http://www.domain.com
- **HTTP:** Hyper Text Transfer Protocol – This is how you view WebPages on the Internet.
- **FTP:** File Transfer Protocol – This is how you send files to and from the server.
- **MYSQL:** This is a type of database engine.
- **Thawte key:** This is a key that you get to have a secure web site
- **PROFTPD–** This is the FTP server to accept FTP connections to allow clients to upload/download data for the web sites.
- **EXIM** - This is the mail server, which allows the mail to send and receive to the server.
- **POP3d–** This is your POP server, which is how you get the mail from the server.  
Example: outlook expr1ss or Netscape mail.

---

## Introduction to the Cpanel3 usage

---

### Section III



The is the Default Theme for Cpanel3, which can be customized

The Cpanel is the manager for the client side. This will allow all clients to self service themselves while they are hosted. The Cpanel includes the most common features that relieve tech support issues such as adding email to setting up Ftp accounts and CGI Scripts. Once the client gets used to the Cpanel, there will be very little tech support needed. While more and more people use the Cpanel, we will add more features depending on the their needs. There is a Cpanel “Wish List” so people can send requests for features to be added. The screen shot above is the Default Theme used. You can create your own theme for your company.

### **Cpanel Features:**

- **Apache Handlers Editor** – This will allow users to enter handlers for apache (so web server will deliver files to the end user correctly). This is usually for advanced users.
- **Network Tools**
  - **TraceRoute** – To allow you to test the hops between the server and the client. This is used to troubleshoot lag or network problems.
  - **Domain Lookup** – You can lookup a domain to see if its available to register or to see who owns it. This also can give you contact information of an internet provider who hosts the site.
- **SSH Shell Session** - Secure Shell Session – This will encrypt the session between your computer and the server. This is a good way to work while doing server work or using root.

- **Web and Ftp Stats**

- **Analog Stats** – This is a common way to view the traffic that has been to your site. You can see where visitors are coming from, what country, network or what site sent them to your site.

- **Webalizer Stats (www/ftp)** This is a more graphical interface to track the visitors to your web site. This will show the standard features from referring links to where they came from. This is close to the analog Stats, just more graphical viewing.

- **View Last Visitors** – This will show the last 300 visitors on your Web Site.

- **Error Log** – This will display any errors you may have on your site.

- **MYSQL Database Manager** – This will add MYSQL databases to your site.

- **Add/Remove Database Users** – Add and remove the users in the database.

- **Create/Drop Databases** - This will Create or Delete the databases.

- **Add users to a database** - Will add users to the Database.

- **Web Based File Manager** - This is the File manager for your account. You can edit WebPages, delete files and view the content in your dir.

- **Error Page Editor** – You can make custom error pages for your site, instead of the old boring 404 errors ect.

- **SubDomain Manager** – You can add subdomains with this feature. Example: “something.domain.com”

- **Web Protect (htaccess editor)** – This is where you can add security to directories in your website. You can apply password protection to “employee only section”

- **Mime Type Editor** – This is an advanced feature. You can add mime type to your account, real audio file mime, so you can play files in the web browser.

- **Chat Room - Entropy Chat [html based chat]** – This is an add-on to allow visitors to chat in the web browser on your web site.

- **Apache Bandwidth Monitor** – This tells you how much bandwidth is being used for the account.

- **Ftp Account Manager**

- **Anonymous Ftp Controls** – You can add users to the FTP server to access sections of the site.

- **Email Manager**

- **Pop Account Manager** – Add users for email accounts, POP accounts and accounts that use “OUTLOOK EXPRESS” or “NETSCAPE MAIL”

- **Forwarding Manager** – You can set up forwarding email accounts, forward sales@domain.com to harry@aol.com.

- **Default Router Editor** - This is your default mail config. Normally you don't need to edit this.
- **Auto Responder Manager** – This is the auto responder editor where you can have your email auto reply a user to say “thanks we have received your email”
- **WebMail** – This is an email mail based email client, so that you can read your email in the web browser. “Like HOTMAIL”
- **Mailing Lists (Mailman)** This is a mailing list editor to allow you to create mailing lists for your fans or subscribers.
- **Mail Filter Editor** - You can set up blockers for your account “spammers”
- **Preinstalled CGI**
- **Random Html Generator** – random text for pages
- **Guest Book** – Users can sign a guest book; those who come and visit your site.
- **Counter** – Add a hit counter on your web page to track how many people are going to your site and display on your web page.
- **Clock** – Add a clock to your site.
- **Countdown** – Add a countdown timer to your site to “countdown to special events.
- **Cgiemail** – This is a Cgi script to allow forms to work in the web browser.
- **FormMail-clone** – Another way to activate forms in the web browser.
- **EntropySearch** – A built-in search engine for your web site. This will add searchable pages within your site. Visitors can now search your site for your products or words in a web page.
- **EntropyBanner** – A banner manager for your site for others to link the banners to your site.
- **EntropyCart** - Landing Soon “Shopping Cart.”

Each one of these features will take some time to get used to. Everything is simple, it's just a matter of playing around and getting familiar with each item. There are going to be more features added shortly to make things even easier!

---

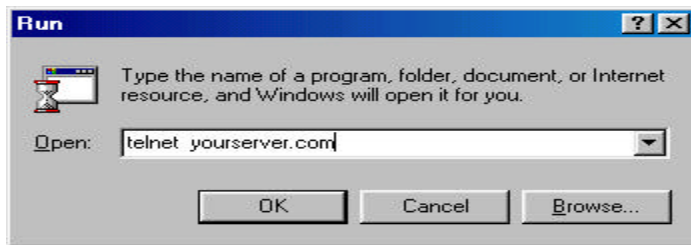
## SHELL COMMANDS

---

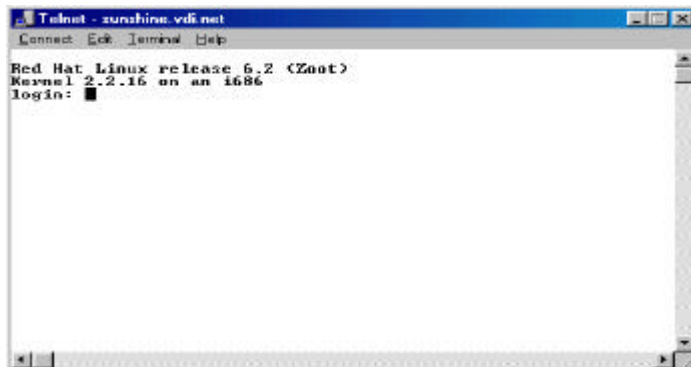
### Section VI

Telnet is the most popular way to get access to the server. With the term “SHELL ACCESS” you will be able to see even more of what is going on. Some users actually prefer using the shell access over the Webhost Manger to control the server. Lets start with getting to the server and seeing what's going on:

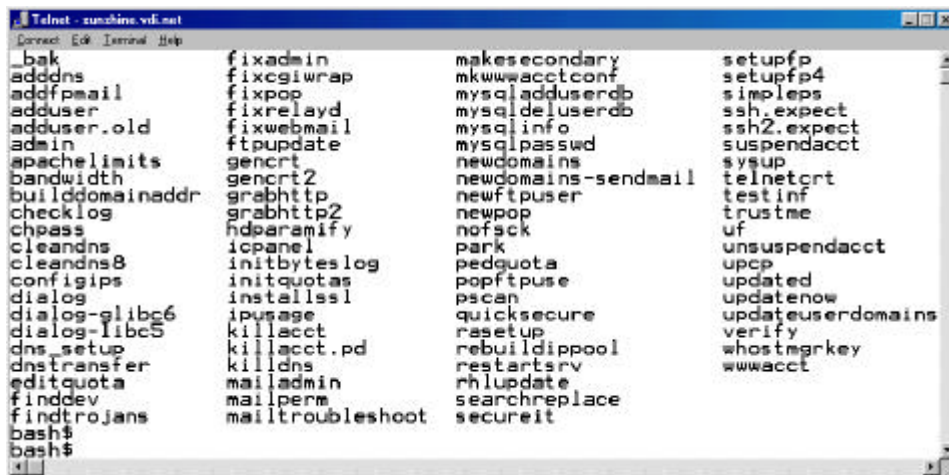
Open Run from the start menu on your windows system and type telnet servername.com



Login with your account information:



The following commands are available only with servers installed with Cpanel3 and are not to be confused with the LINUX operating system.



This is a screen shot after you type ; **ls /scripts**  
Each command can be run from the shell on the format of:  
**/scripts/<command>** "with out the <> of course"

The Commands in the directory are called "scripts" and are mostly related to the Webhost Manager. You can get daring and use the commands manually. You of course may explore this option. Now lets move on to the next set of simple commands. All commands are in lower case unless noted other wise.

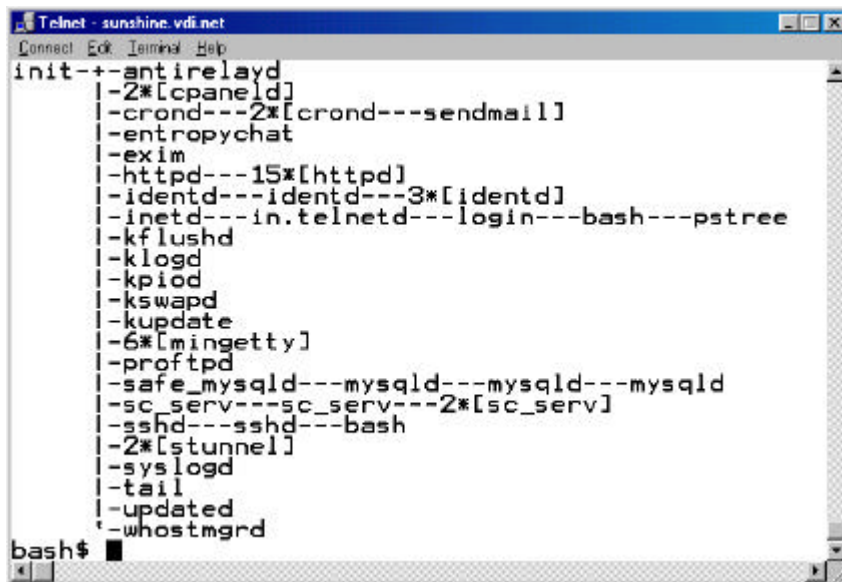
**w** – a single w will show cpu load, and which users are logged into their shell accounts.



**who** - This command will show you who is also logged on the shell account

**uptime** – This command will let you know how long the server was up since it's last reboot.

**ps tree** – This command will tell which top level services are running. Such as httpds, email and Mysql processes. This feature is also handy to why the server may be slow. You can see how many are running. Example below:



```
Telnet - sunshine.vdi.net
Connect Edit Terminal Help
init--antirelayd
|-2*[cpanel]
|-crond---2*[crond---sendmail]
|-entropychat
|-exim
|-httpd---15*[httpd]
|-identd---identd---3*[identd]
|-inetd---in.telnetd---login---bash---pstree
|-kflushd
|-klogd
|-kpiod
|-kswapd
|-kupdate
|-6*[mingetty]
|-proftpd
|-safe_mysql---mysqld---mysqld---mysqld
|-sc_serv---sc_serv---2*[sc_serv]
|-sshd---sshd---bash
|-2*[stunnel]
|-syslogd
|-tail
|-updated
|-whostmgrd
bash$
```

**uname -a** - This will show you the kernel release version.

**date** – date and the time on the server

There are quite a bit of commands for the Linux Operating system. There are books with just the commands. “Linux in a nutshell” is a very popular book by Oriely.

The following command will reboot the server correctly and is very important that it’s done correctly.

**/sbin/shutdown -r now** > this is the full command to reboot the server nicely

If in the event that the server is overloaded and needs a forced reboot

**/sbin/reboot -f** > will cause the server to do a forced reboot.

The next sets of commands are related to the hard-rive and disk usage. You may at times like to view how much space a user is using or see the file sizes. Your server logs can grow very quickly if you have lots of activity- you may need to delete the log files time to time.

There are basically 2 locations for the most important logs locations.

**/etc/httpd/domlogs** and **/var/log/**

Now the following commands will display the Hard Drive Disk Usage:

**df -h** >an example output is below:

A terminal window titled 'Telnet - sashimi.vdi.net' showing the output of the 'df -h' command. The output is a table with columns: Filesystem, Size, Used, Avail, Use%, and Mounted on. The rows show data for /dev/hda1 and /dev/hdc1.

Filesystem	Size	Used	Avail	Use%	Mounted on
/dev/hda1	3.8G	2.8G	784M	79%	/
/dev/hdc1	12G	3.5G	8.1G	30%	/home

if you cd to **/var/log** and then run the following command

**du -hcs** < this will show you the total file sizes in this dir.

A terminal window titled 'Telnet - sashimi.vdi.net' showing the output of the 'du -hcs' command. The output shows the total size of the /var/log directory as 51M.

```
bash$ pwd
/var/log
bash$ du -hcs
51M
51M    total
bash$
```

If you wanted to see each file detail on the sizes, you can add the wild card.

**du -hcs \*** < this will show each file detail "if you have a large amount of files and it may scroll down your screen at 6000 miles an hour you can put a break in. **du -hcs \* | more** < you can now hit the space bar between each viewing.

There is much documentation on the Internet on commands for running a server; there are just too many to explain and this manual would end up being thicker then a bible.

We hope you will learn how to successfully run a hosting company, 99% of the business is common sense, organization and not getting ahead of yourself. You can work with your family and everyone can be assigned a certain duty. This is a great way to start and grow into bigger things.

Good luck and best wishes

Darkorb Communications